



# 64000B

## Softstyle Youth T-Shirt

### DETAILS

**Fabric**  
**Yarn Count**  
**Features**

100% Ring Spun Cotton, 153.0 G/SqM (White 144.0 G/SqM)  
30/1

Made with our soft ring spun cotton and cotton blends, Softstyle's high stitch density fabric offers a smooth printing surface.

Classic width, rib collar

Taped neck and shoulders for comfort and durability

Modern classic fit, seamless body - side seam on size XS

High-performing black tear-away label; transitioning to recycled material

CPSIA Tracking Label Compliant

Companion styles: 64000, 64000L

Gildan partners with Better Cotton to improve cotton farming globally

Made with OEKO-TEX certified low-impact dyes

Plastic waste is diverted from landfills annually by the removal of polybags from all products except colour white

[Learn more at: Gildan | Making Apparel Better \(gildancorp.com\)](#)

Bangladesh

XS - XL 72 PIECES

18

90

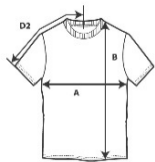
### Made With Respect

### Country of Origin

### Case Packs

### Colours

### SKU's



### SPECIFICATIONS

#### Centimeters

|                                  | Tol-  | Tol+  | XS     | S      | M      | L      | XL     |
|----------------------------------|-------|-------|--------|--------|--------|--------|--------|
| Chest (A)                        | 2.540 | 2.540 | 35.560 | 40.640 | 43.180 | 45.720 | 48.260 |
| Length from HPS (B)              | 2.540 | 2.540 | 45.720 | 52.070 | 55.880 | 59.690 | 63.500 |
| Sleeve length (Center back) (D2) | 1.905 | 1.905 | 29.210 | 34.290 | 36.830 | 39.370 | 41.910 |

#### Inches

|                                  | Tol-  | Tol+  | XS     | S      | M      | L      | XL     |
|----------------------------------|-------|-------|--------|--------|--------|--------|--------|
| Chest (A)                        | 1.000 | 1.000 | 14.000 | 16.000 | 17.000 | 18.000 | 19.000 |
| Length from HPS (B)              | 1.000 | 1.000 | 18.000 | 20.500 | 22.000 | 23.500 | 25.000 |
| Sleeve length (Center back) (D2) | 0.750 | 0.750 | 11.500 | 13.500 | 14.500 | 15.500 | 16.500 |

| Colours              | Code | Colour Chip | Sizes | Comments                                              |
|----------------------|------|-------------|-------|-------------------------------------------------------|
| Black                | 036  |             | XS-XL |                                                       |
| Charcoal             | 042  |             | XS-XL |                                                       |
| Daisy                | 098  |             | XS-XL |                                                       |
| Dark Heather         | 108  |             | XS-XL | 65% Polyester, 35% Cotton - Recommended for bleaching |
| Graphite Heather     | 516  |             | XS-XL | 50% Cotton, 50% Polyester                             |
| Irish Green          | 167  |             | XS-XL |                                                       |
| Light Blue           | 069  |             | XS-XL |                                                       |
| Light Pink           | 020  |             | XS-XL |                                                       |
| Maroon               | 083  |             | XS-XL |                                                       |
| Military Green       | 106  |             | XS-XL |                                                       |
| Navy                 | 032  |             | XS-XL |                                                       |
| Orange               | 037  |             | XS-XL |                                                       |
| Purple               | 081  |             | XS-XL |                                                       |
| Red                  | 040  |             | XS-XL |                                                       |
| Ring Spun Sport Grey | 295  |             | XS-XL | 90% Cotton, 10% Polyester                             |
| Royal                | 051  |             | XS-XL |                                                       |
| Sapphire             | 026  |             | XS-XL |                                                       |
| White                | 030  |             | XS-XL |                                                       |

### CHANGES

#### Additions

XS, S, M, L, XL

Total Net Change 20 SKU's

Dark Heather, Graphite Heather, Maroon, Military Green